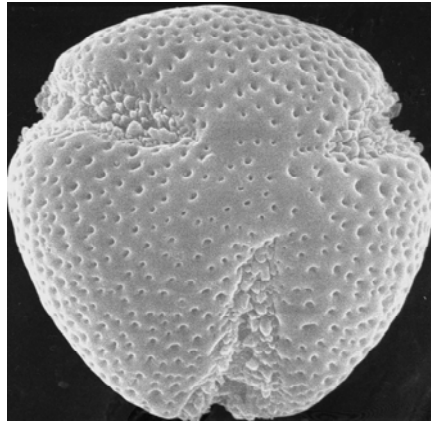


Linnean Society Palynology Specialist Group

## **Evolution and development of pollen and spores: an integrated approach**



A one-day meeting to be held at the Linnean Society of London (Burlington House, Piccadilly, London W1J 0BF) on 25 October 2007 (<http://www.linnean.org/>)

Registration free

This meeting will provide an informal forum to bring together scientists (including PhD students and postdoctoral researchers) from several interfacing fields of pollen and spore morphology and development, including those working on the genetic controls of pollen and spore development in the context of improved phylogenies. Our aim is to initiate a discussion process between pollen morphologists, palaeobotanists and developmental geneticists towards more closely integrated research goals.

Speakers include: Beatrice Albert (Paris), Hugh Dickinson (Oxford), Nina Gabarayeva (St Petersburg), Michael Hesse (Vienna), John Richardson (London), Hervé Sauquet (Kew), Maria Suarez (Barcelona), David Twell (Leicester), Charles Wellman (Sheffield). Further offers of talks are welcome.

The meeting will be followed by a wine reception in the Linnean Society Library.

Contact: Carol Furness, Micromorphology Section, Jodrell Laboratory, Royal Botanic Gardens, Kew, Richmond, Surrey, TW9 3DS, UK ([c.furness@kew.org](mailto:c.furness@kew.org))